

Certificate No. R 50415728 Our Reference 50165285 028 Appendix No. 1.27

Constructional Data Form (CDF) for Electrical Appliances

Page 1 of 4

License holder : Delta Electronics, Inc.
252, Shangying Road, Guishan Industrial Zone, Taoyuan City 33341 Taiwan

Factory : 1. Delta Electronics (Jiangsu) Ltd.
215200, No.1688, Jiangxing East Road, Wujiang Economic and Technological Development Zone, Suzhou City, Jiangsu Province, P. R. China

2. DELTA ELECTRONICS (THAILAND) PUBLIC CO., LTD.
111 Moo 9 Wellgrow Industrial Estate Bangna-Trad Rd. Tambon Bangwua, Amphur Bangpakong, Chachoengsao 24180, Thailand

3. DELTA ELECTRONICS (DONGGUAN) CO., LTD.
He Tian Xia High-Tech Industrial Park Shijie Town, Dongguan Guangdong Province 523308, P.R. China

4. DELTA ELECTRONICS (CHEN ZHOU) CO LTD
CHEN ZHOU EXPORT ZONE, CHENZHOU HUNAN, P.R. China

5. Delta Electronics India Pvt Ltd
Survey Number 1007 Chennathur Village Hosur Krishnagiri District Hosur Tamil Nadu 635109 India

Type of Appliance : DC Brushless Fan

Type Designation : TFC0424EN-02XXXXXX, EFB0424VHD-CXXXXXX, EFB0424HD-CXXXXXX, EFB0424LD-CXXXXXX, PFB1224SE-00XXXXXX, PFB1224HE-00XXXXXX, PFB1224LE-00XXXXXX
(X= A - Z, 0 - 9, "-" or blank)

Rating : See below table

Protection Class : Class III

Supply connection : fixed power cord
 permanent connection
 appliance inlet
 direct plug in
 battery operated
 building-in equipment.

Please tick above box when applicable

TÜV Rheinland Taiwan Ltd. 2020-08-18

Delta Electronics, Inc. 2020-08-12

X 

Project Engineer
Signed by: Carol Y. M. Lee





Date Name Signature

Date Name

Stamp & Signature of licenseholder

Certificate No. R 50415728 Our Reference 50165285 028 Appendix No. 1.27

Constructional Data Form (CDF) for Electrical Appliances

Page 2 of 4

- Additional information :
1. The equipment is also tested and classified as below table according to Table 35 of sub-clause 8.2.1 in standard EN 62368-1:2014. Unless otherwise stated the classified conditions are under rated voltage and normal rotational speed of the fan blade.
 2. Details see below table

Detail Model List				
Type Designation	Rated DC Voltage (V)	Rated Current (A)	Ambient Temp. (°C)	Mechanical energy source classifications
TFC0424EN-02XXXXXX	24	0.40	70	MS2
EFB0424VHD-CXXXXXX	24	0.14	70	MS1
EFB0424HD-CXXXXXX	24	0.10	70	MS1
EFB0424LD-CXXXXXX	24	0.05	70	MS1
PFB1224SE-00XXXXXX	24	4	70	MS3
PFB1224HE-00XXXXXX	24	2	70	MS3
PFB1224LE-00XXXXXX	24	0.8	70	MS3

TÜV Rheinland Taiwan Ltd. 2020-08-18

Delta Electronics, Inc. 2020-08-12

X 

Project Engineer
Signed by: Carol Y. M. Lee





Date Name Signature

Date Name

Stamp & Signature of licenseholder

Constructional Data Form (CDF) for Electrical Appliances

For model TFC0424EN-02XXXXXX

Functional components and/or interchangeable components					
Object/part No.	Manufacturer/ trademark	Type/ model	Technical data	Standard	Mark(s) of conformity
Impeller, Frame Material	Interchangeable	Interchangeable	V-0, 70°C min.	UL 94, UL 746	UL
Bobbin Material	Interchangeable	Interchangeable	V-0, 90°C min.	UL 94, UL 746	UL
Enamel Wire	Interchangeable	Interchangeable	130°C min.	--	UL
PCB Material	Interchangeable	Interchangeable	V-0,105°C min.	UL 796	UL
Lead wires	Interchangeable	Interchangeable	105°C min, 300V min.	UL 758	UL

For models EFB0424VHD-CXXXXXX, EFB0424HD-CXXXXXX, EFB0424LD-CXXXXXX

Functional components and/or interchangeable components					
Object/part No.	Manufacturer/ trademark	Type/ model	Technical data	Standard	Mark(s) of conformity
Impeller, Frame Material	Interchangeable	Interchangeable	V-0, 70°C min.	UL 94, UL 746	UL
Bobbin Material	Interchangeable	Interchangeable	V-0, 80°C min.	UL 94, UL 746	UL
Enamel Wire	Interchangeable	Interchangeable	130°C min.	--	UL
PCB Material	Interchangeable	Interchangeable	V-0,105°C min.	UL 796	UL
Lead wires	Interchangeable	Interchangeable	80°C min, 300V min.	UL 758	UL

TÜV Rheinland Taiwan Ltd. 2020-08-18

Delta Electronics, Inc. 2020-08-12

X 

Project Engineer
Signed by: Carol Y. M. Lee





Constructional Data Form (CDF) for Electrical Appliances

For model PFB1224SE-00XXXXXX, PFB1224HE-00XXXXXX, PFB1224LE-00XXXXXX

Functional components and/or interchangeable components					
Object/part No.	Manufacturer/ trademark	Type/ model	Technical data	Standard	Mark(s) of conformity
Frame, Impeller Material	Interchangeable	Interchangeable	V-0, 70°C min.	UL 94, UL 746	UL
Bobbin Material	Interchangeable	Interchangeable	V-0, 100°C min.	UL 94, UL 746	UL
Enamel Wire for model PFB1224SE- 00XXXXXX	Interchangeable	Interchangeable	155°C min.	--	UL
Enamel Wire for model PFB1224HE- 00XXXXXX, PFB1224LE- 00XXXXXX	Interchangeable	Interchangeable	130°C min.	--	UL
PCB Material	Interchangeable	Interchangeable	V-0,105°C min.	UL 796	UL
Lead wires	Interchangeable	Interchangeable	80°C min, 300V min.	UL 758	UL

TÜV Rheinland Taiwan Ltd. 2020-08-18

Delta Electronics, Inc. 2020-08-12

X 

Project Engineer
Signed by: Carol Y. M. Lee

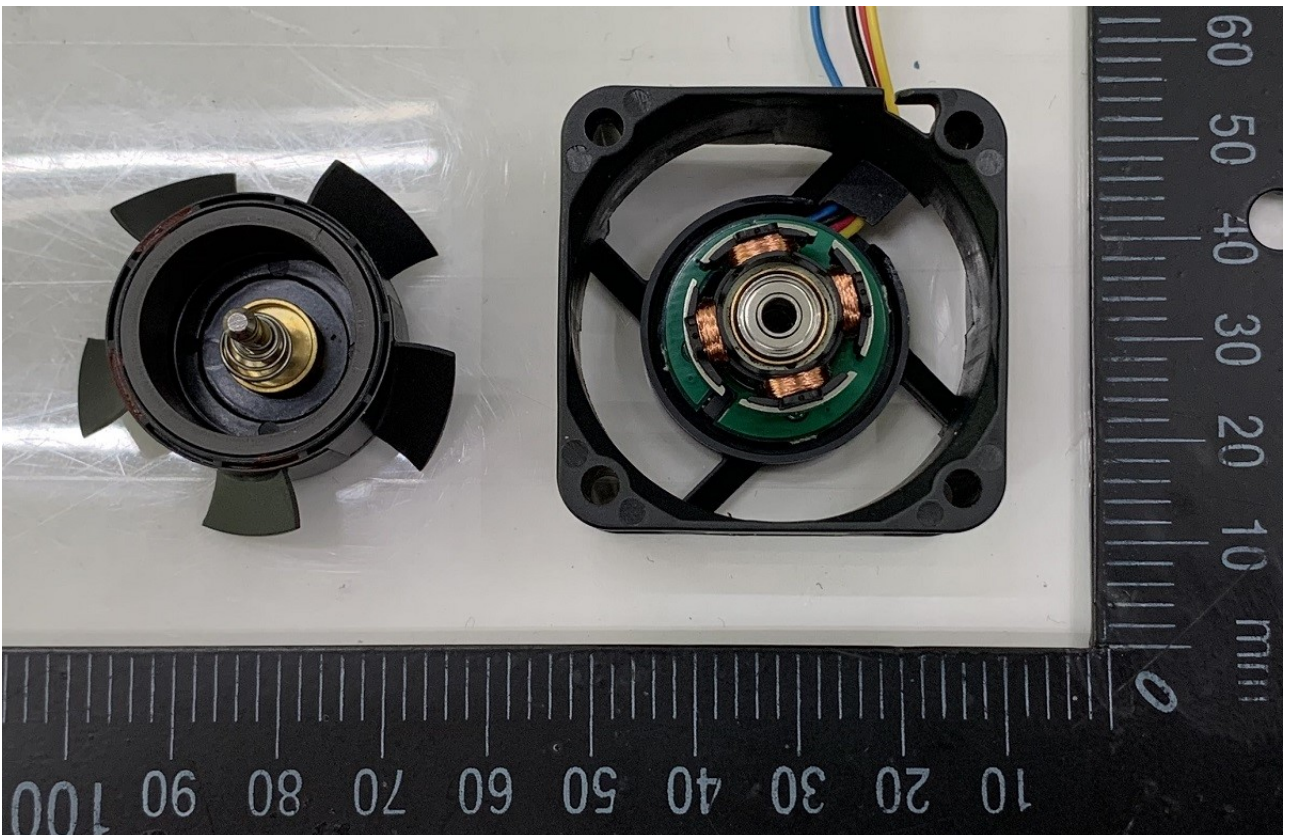
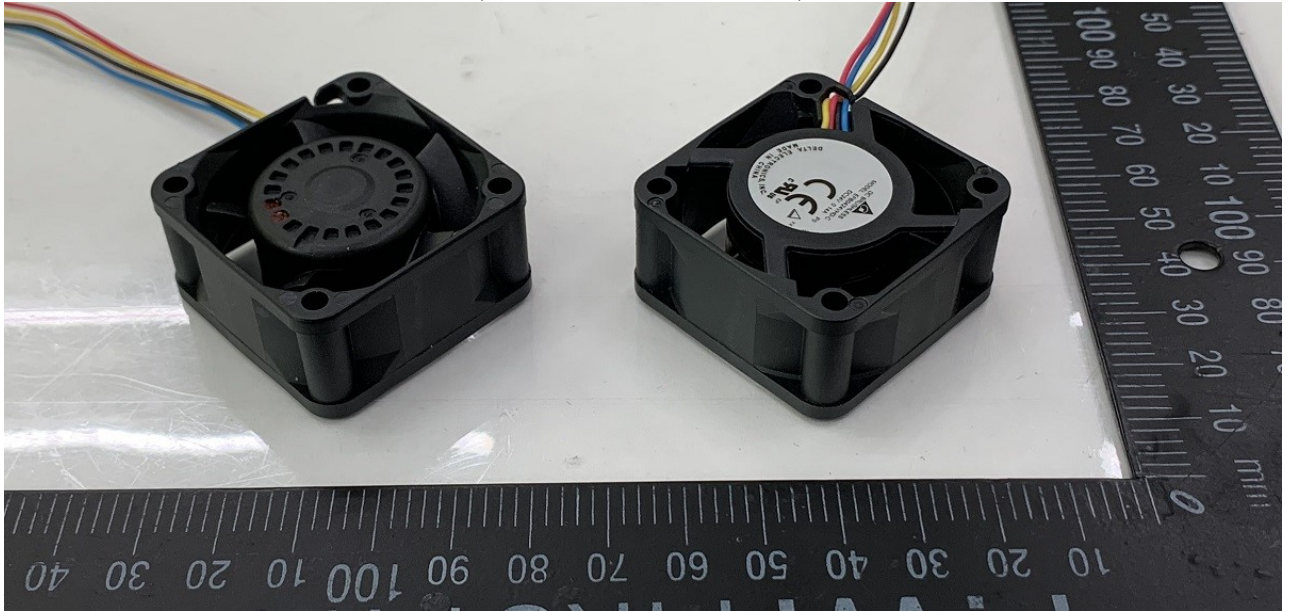




Product: DC Brushless Fan

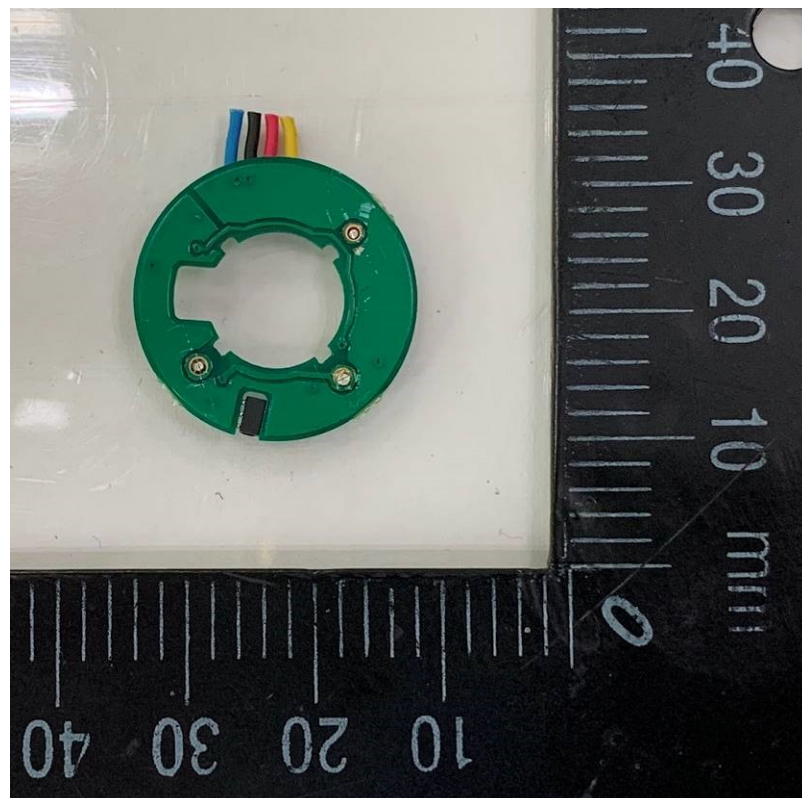
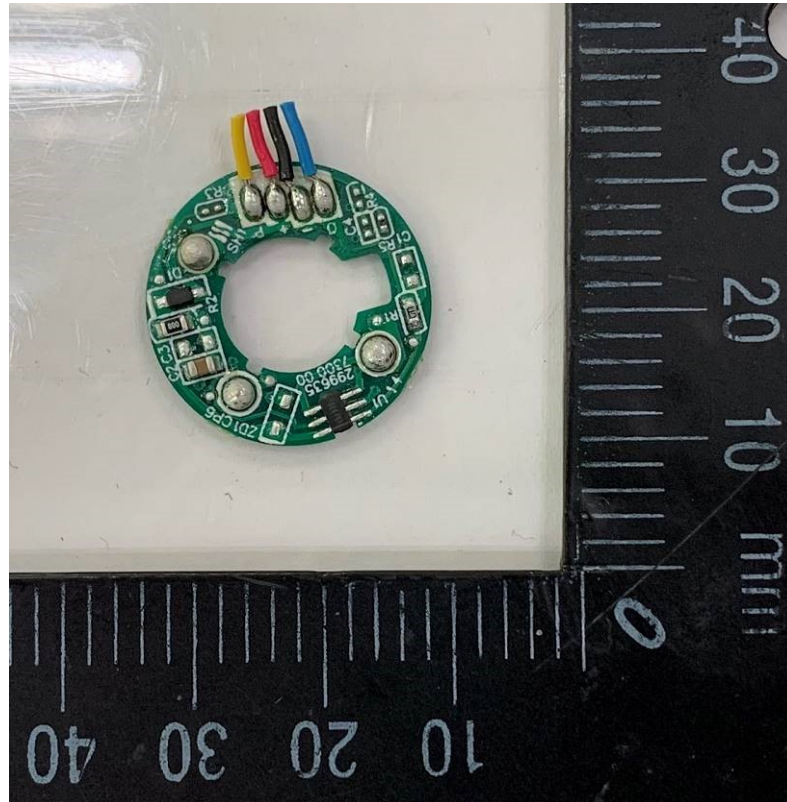
Type Designation: TFC0424EN-02XXXXXX, EFB0424VHD-CXXXXXX, EFB0424HD-CXXXXXX, EFB0424LD-CXXXXXX, PFB1224SE-00XXXXXX, PFB1224HE-00XXXXXX, PFB1224LE-00XXXXXX (X= A - Z, 0 - 9, "-" or blank)

EFB0424VHD-CXXXXXX, EFB0424HD-CXXXXXX, EFB0424LD-CXXXXXX



Product: DC Brushless Fan

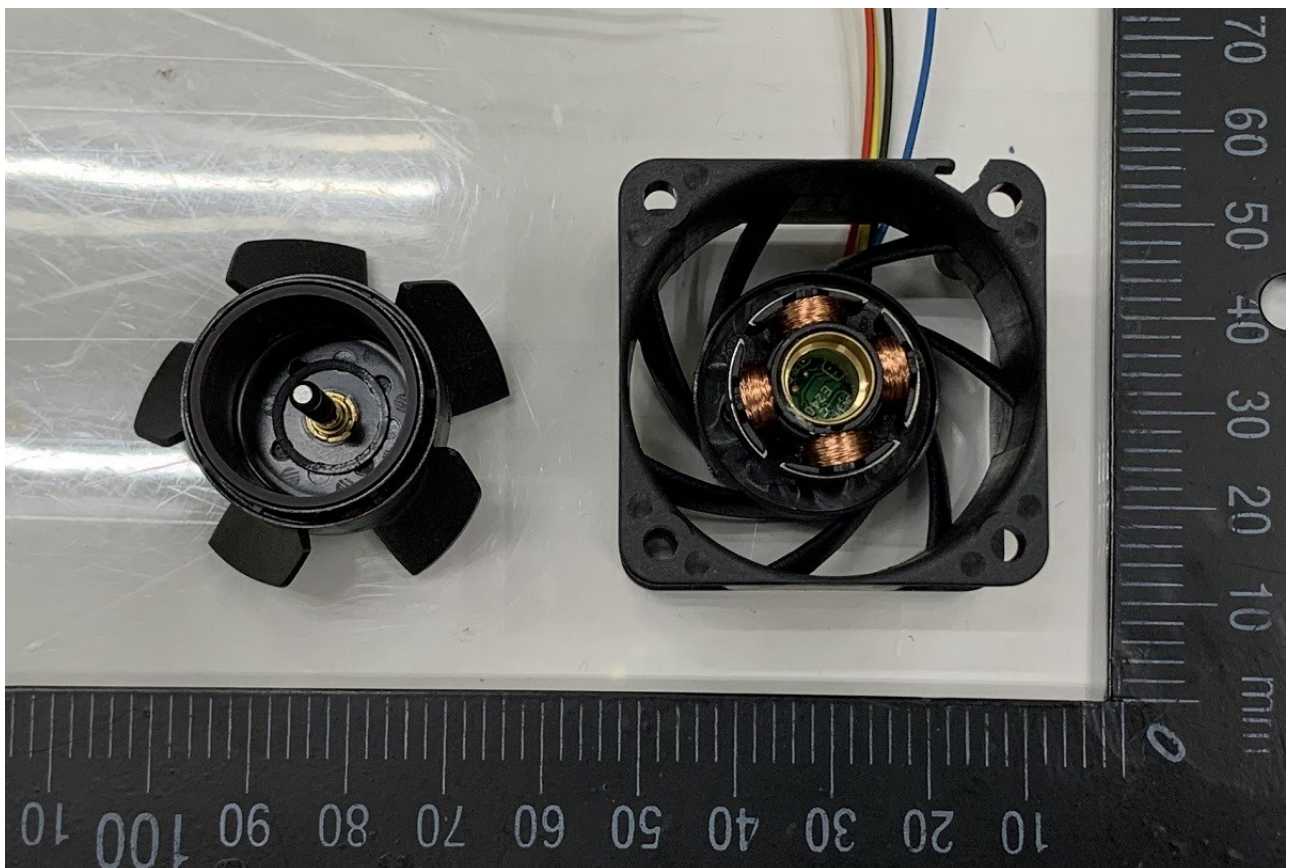
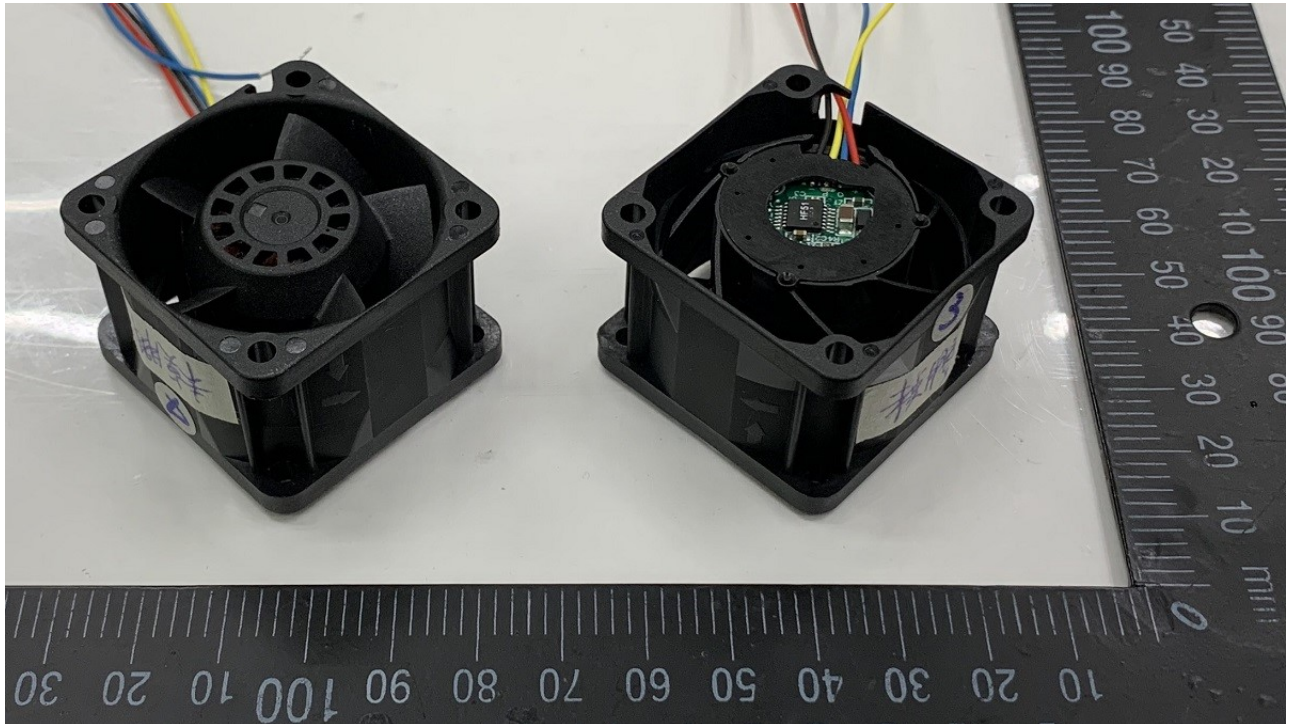
Type Designation: TFC0424EN-02XXXXXX, EFB0424VHD-CXXXXXX, EFB0424HD-CXXXXXX, EFB0424LD-CXXXXXX, PFB1224SE-00XXXXXX, PFB1224HE-00XXXXXX, PFB1224LE-00XXXXXX (X= A - Z, 0 - 9, "-" or blank)



Product: DC Brushless Fan

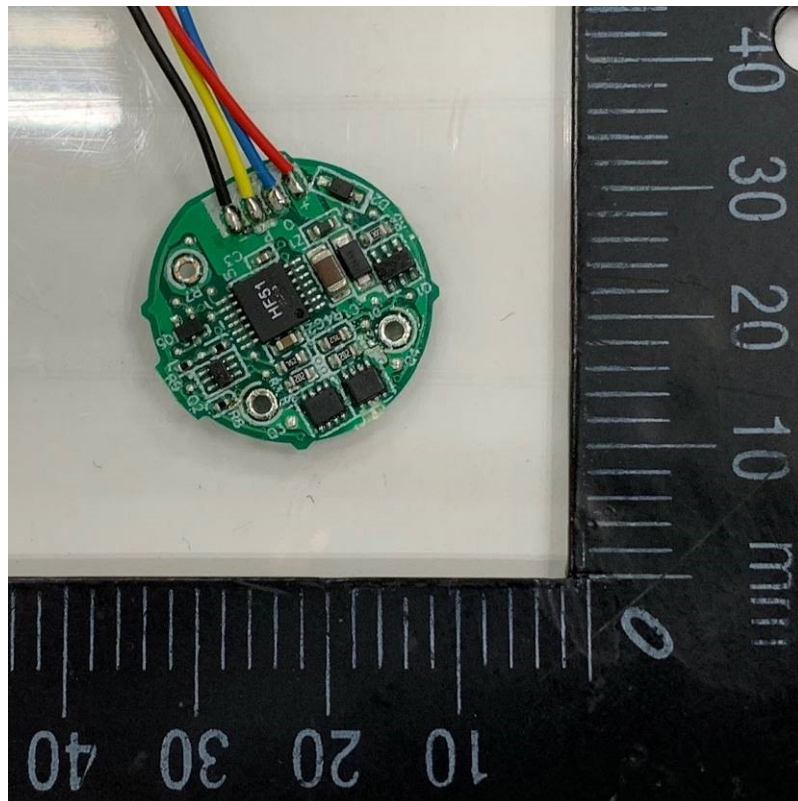
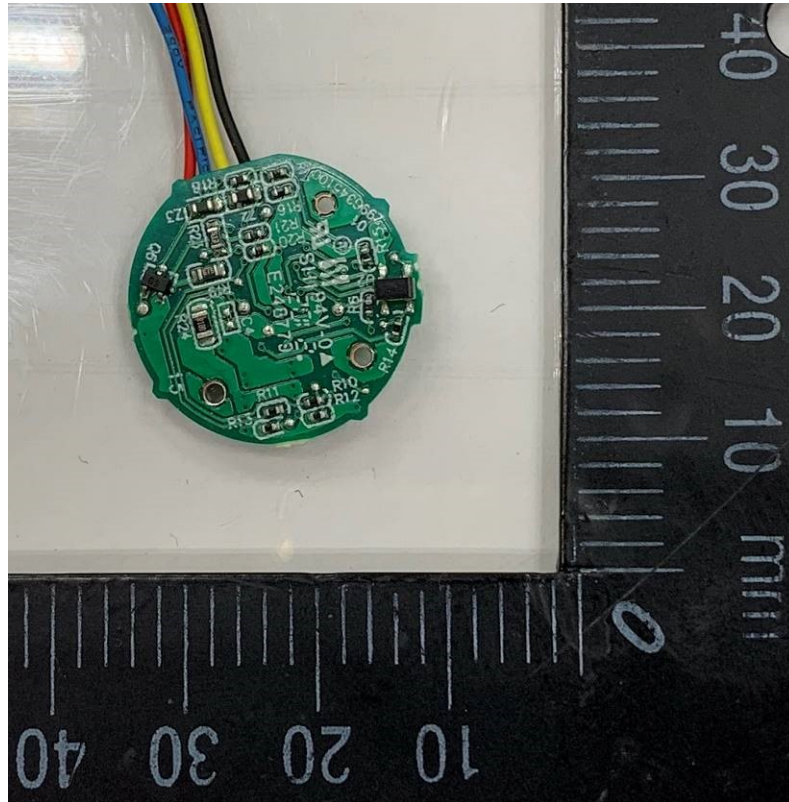
Type Designation: TFC0424EN-02XXXXXX, EFB0424VHD-CXXXXXX, EFB0424HD-CXXXXXX, EFB0424LD-CXXXXXX, PFB1224SE-00XXXXXX, PFB1224HE-00XXXXXX, PFB1224LE-00XXXXXX (X= A - Z, 0 - 9, "-" or blank)

TFC0424EN-02XXXXXX



Product: DC Brushless Fan

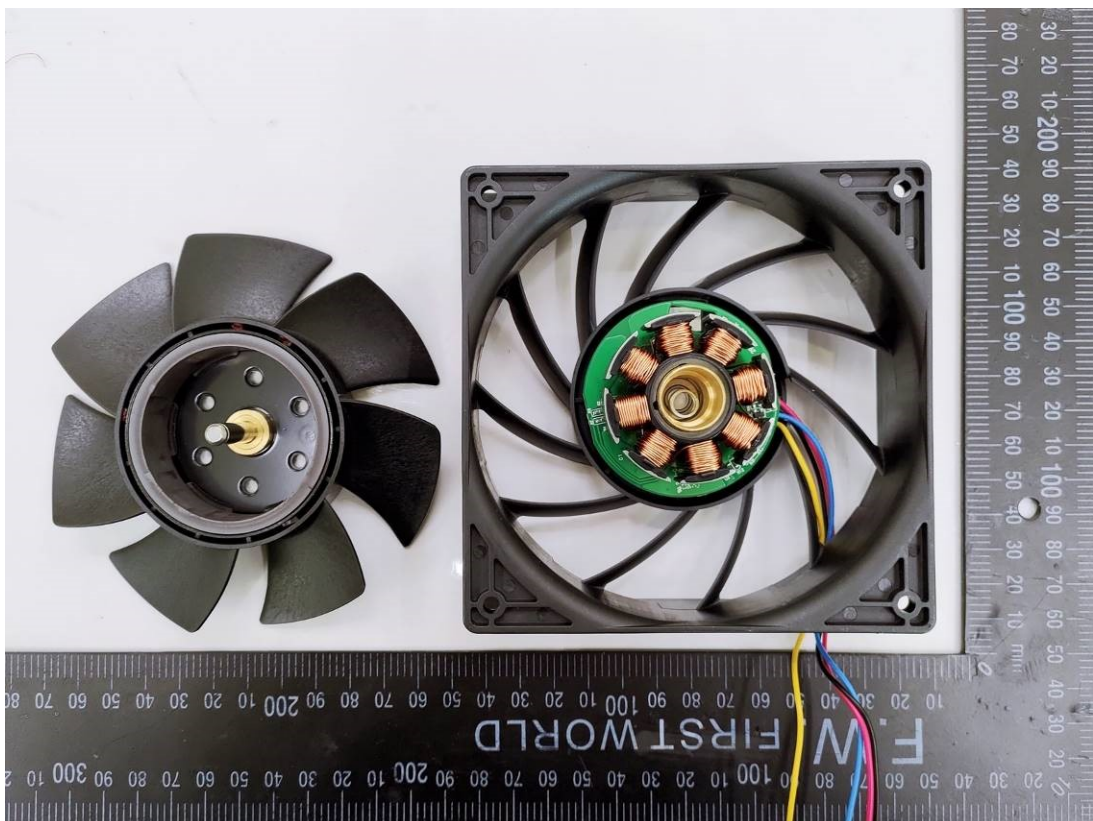
Type Designation: TFC0424EN-02XXXXXX, EFB0424VHD-CXXXXXX, EFB0424HD-CXXXXXX, EFB0424LD-CXXXXXX, PFB1224SE-00XXXXXX, PFB1224HE-00XXXXXX, PFB1224LE-00XXXXXX (X= A - Z, 0 - 9, "-" or blank)



Product: DC Brushless Fan

Type Designation: TFC0424EN-02XXXXXX, EFB0424VHD-CXXXXXX, EFB0424HD-CXXXXXX, EFB0424LD-CXXXXXX, PFB1224SE-00XXXXXX, PFB1224HE-00XXXXXX, PFB1224LE-00XXXXXX (X= A - Z, 0 - 9, "-" or blank)

PFB1224SE-00XXXXXX, PFB1224HE-00XXXXXX, PFB1224LE-00XXXXXX



Product: DC Brushless Fan

Type Designation: TFC0424EN-02XXXXXX, EFB0424VHD-CXXXXXX, EFB0424HD-CXXXXXX, EFB0424LD-CXXXXXX, PFB1224SE-00XXXXXX, PFB1224HE-00XXXXXX, PFB1224LE-00XXXXXX (X= A - Z, 0 - 9, "-" or blank)

